



**New Mexico Council of Chapters Meeting
Roswell, New Mexico
September 20 and 21, 2013**



**Schedule of Events
Roswell, New Mexico**

The Pecos Valley Chapter, Military Officers Association of America has prepared the following schedule of events for the September 2013 Council of Chapters meeting.

September 20th (Friday):

5:00 p.m.–7:00 p.m. Wine & Cheese Welcoming Reception Cost: \$10.00
Anderson Museum of Contemporary Art– 409 East College Blvd

September 21st (Saturday): All functions are at the Holiday Inn 3620 North Main

11:30 a.m.–12:00 p.m. No host Social - Oasis Bar & Grill, Holiday Inn

12:00 p.m.–1:15 p.m. Luncheon – Chaves Room Cost: \$15.00
Guest Speaker: BG Richard V. Geraci, USA, retired
Commandant, New Mexico Military Institute
The menu is Soup & Sandwich buffet with coffee or tea.

1:15 p.m.– 1:30 p.m. Rest Break

1:30 p.m.– 4:30 p.m. Council of Chapters Business Meeting– Chaves Room

5:15 p.m.– 6:00 p.m. No host Social - (Hallway outside Chaves Room)

6:00 p.m. Dinner: Chaves Room Cost: \$25.00
Guest Speaker: We have invited the Governor but have not yet heard.

Menu: Choice of Beef Tips in Jack Daniels Au Juice or
Chicken Breast in Garlic White Cream Sauce
With Fresh Autumn Salad with seasonal fruits & crumbled feta cheese,
Mashed Red Skin Potatoes, Green Beans with Roasted Red Peppers,
Assorted Rolls, Raspberry Sorbet, coffee and tea

Reservations are required. Please make your reservations for Friday night and both Saturday events (lunch and dinner) **by September 5, 2013** to Sue Goodman, 575-623-9403 or wac1971@hotmail.com. Please state your dinner preference when you make your reservations.

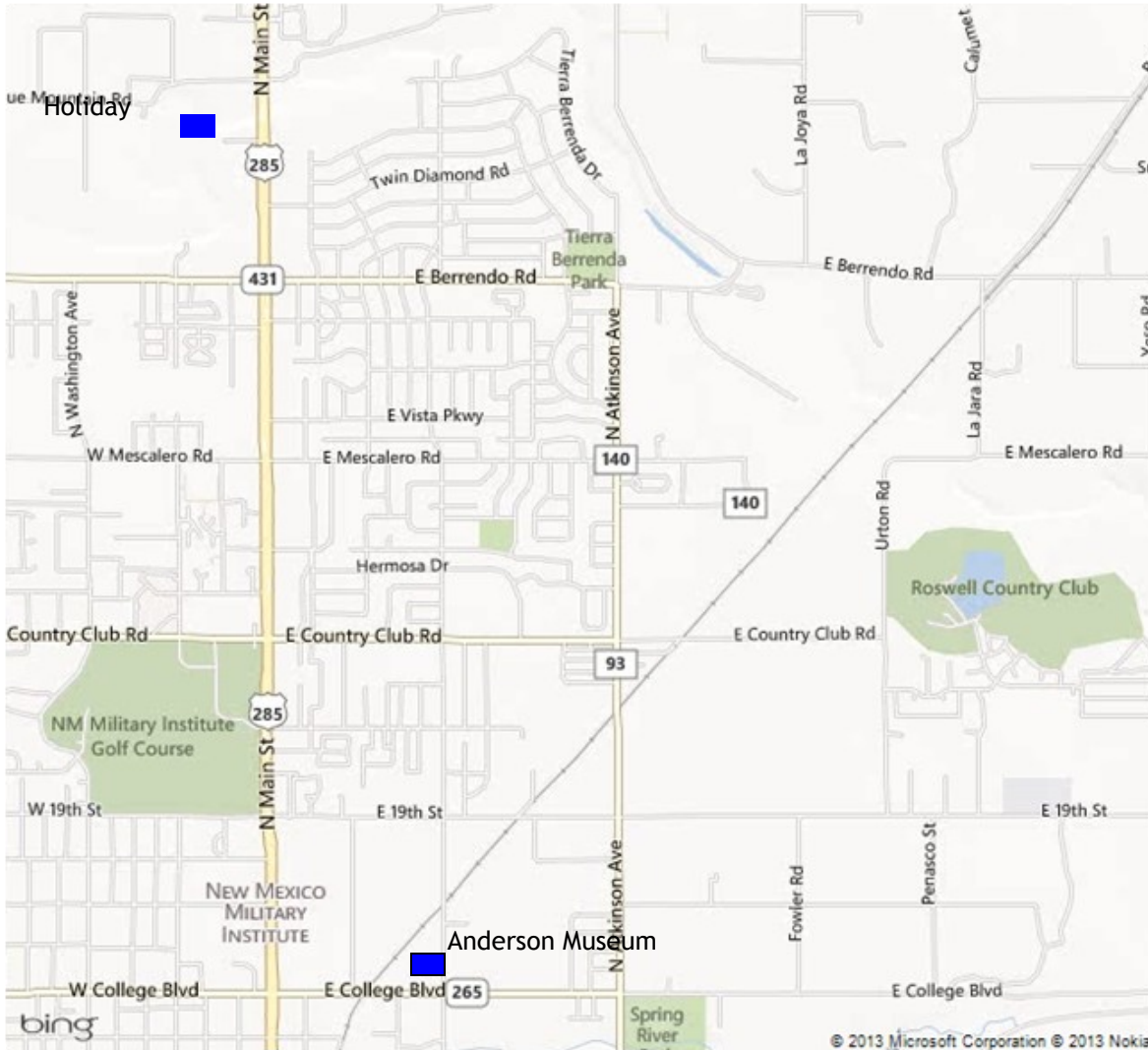
Hotel Reservations are to be made separately. We are pleased to have reserved 25 rooms at the NEW (opened in March 2013) Holiday Inn, 3620 North Main St, Roswell at the rate of \$89.00 per night double occupancy. **To receive this rate, reservations must be made by 6 September 2013 and you must let them know you are attending the Council of Chapters when you reserve your room.** The direct number to the Holiday Inn is 575-623-3216.

Directions, a map and information on other hotels is on the next page followed by an introduction to Roswell.

Directions for Weekend Events

The new Holiday Inn is located at north end of town on Main Street. Coming in from the North, it is less than a mile from the Mall on the west side of the street right behind the Murphy Express Gas Station. You can see the Holiday Inn sign from the road.

The Anderson Museum is at 409 East College Blvd, less than 3 miles south of the Holiday Inn. From Main Street, turn East at College, cross the rail road tracks and the Museum is on the left.



Other Hotels in the vicinity

Other hotels in Roswell that would be adequate and are relatively close to the Holiday Inn where all of our Saturday activities will take place are:

Comfort Suites	3610 North Main St.	575-623-5501
Hampton Inn	3607 North Main St	575-623-5151
Comfort Inn	3595 North Main St	575-623-4567
Super 8 Motel	3575 North Main St	575-622-8886
Holiday Inn Express	2300 North Main St	575-627-9900
Candlewood Suites	4 Military Heights Drive	575-623-4300
Fairfield Inn	1201 North Main St	575-624-1300

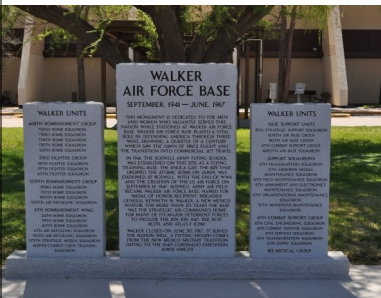
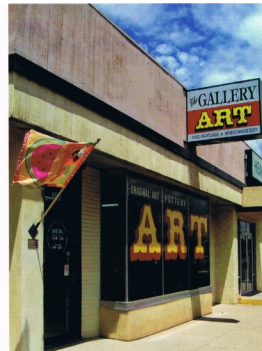
Welcome all to the Council of Chapters Meeting and to MY TOWN!

Any time I meet people and tell them I live in Roswell, invariably they say, "Oh, the UFO incident" and while it is true that Roswell derives great benefit from the UFO incident and the museum, we are so much more. On the next page, I provide a list of places to go and things to see.

If you are not joining the Council for lunch at the Holiday Inn, as a local, I only have two recommendations. Though you have many choices, these two are my favorites.

Tinnie's Mercantile & Deli, 412 West 2d Street, Hours: 10 am – 5 p.m. (It is across the street from the Historical Society.)

La Salsa Restaurant—In the mall (North of Holiday Inn on the west side of the street) Hours: 10 am—8 pm. Go in the main door and it is to the right. Small family owned, everything is home made and delicious.





Places to Go & Things to See &
Recommended Places to Eat
September 21, 2013

Anderson Museum of Contemporary Art - 409 East College

Hours: 1 p.m. – 5 p.m.

Cost: Free, donations accepted.

Duration of Stay: As long as you want.

Directions: Turn East on College, cross the rail road tracks, Museum is on the left.

Spring River Zoo - 1306 East College Blvd

Hours: 10 a.m. - 6:30 p.m.

Cost: Free

Duration of Stay: As long as you want.

Directions: Turn East on College, follow College to the gate on the right. The Zoo is less than a mile from Main Street.

Roswell Museum & Art Center - 100 West 11th St

Hours: 9 a.m.– 5 p.m.

Cost: Free, donations welcome.

Duration of Stay: As long as you want.

Directions: Turn west on 11th Street, south on N. Richardson and the museum and parking lot are on the left.

Historical Society for Southeast New Mexico - 200 N. Lea Ave

Hours: 1 p.m.– 4 p.m.

Cost: Free, donations accepted.

Duration of Stay: As long as you want.

Directions: Turn west on 2d Street. Museum is on the corner of Lea and 2d Street less than a half mile from Main Street.

The Roswell Fine Arts League Gallery—107 East 5th St

Hours: 10:30 a.m. – 4:30 p.m.

Cost: Free

Duration: As long as you want or until you run out of money because all the art work is for sale.

Directions: Turn West on 5th St. Gallery is on left side of the street.

UFO Museum - 114 North Main Street

Hours: 9 a.m–5 p.m.

Cost: Military & Seniors - \$3.00 ((Seniors must be 65)

Duration of Stay: As long as you want

Walker Air Force Base Museum 1 Jerry Smith Circle

Hours: 10 a.m.–3 p.m.

Cost: Free, donations welcome.

Duration of Tour: As long as you want.

Directions: Take Main Street to 2d St, turn west onto 2d Street and travel approximately a mile to Sunset. Turn left onto Sunset and travel for approximately 7 miles; Sunset becomes Earl Cummings Loop, after about a mile turn right onto Brice Place and then almost immediately left onto Enterprise and it is approximately 1/2 mile to the museum.

